

# Weekly Economic Position Report 3<sup>rd</sup> Week of December 2008

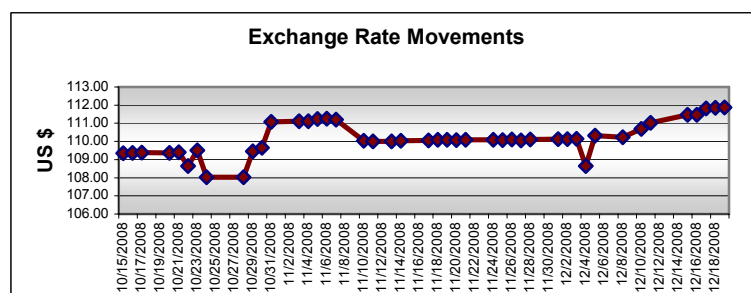
- Interest Rates Movements
- Exchange Rates
- Money supply
- Share Market
- Crude Oil Prices
- Crude Oil Imports 2005/06
- Refined Products Prices
- Inflation Trend
- Real Interest Rates
- Colombo Consumer Price Index
- Public Debt
- GDP Growth Rate (%) - Quarterly
- International Commodity Prices
- Weekly Commodity Prices
- External Finance
- Private Remittances
- External Trade
- Summary of Fiscal Operation
- Tourist Arrivals and Earnings by month (2004/06)

## Interest Rate Movements

|  | Week Ending Dec 19 | Week Ago | Month Ago | Year Ago |
|--|--------------------|----------|-----------|----------|
| Repo   | 10.50              | 10.50    | 10.50     | 10.50    |
| Call Money                                       |                    |          |           |          |
| Weekly Average                                   | 15.14              | 18.10    | 18.83     | 14.20    |
| Treasury Bill (Yield rate)                       |                    |          |           |          |
| 3 Months   | 17.26              | 17.20    | 17.20     | 18.99    |
| 6 Months   | 18.46              | 18.42    | 18.28     | 19.73    |
| 1 Year   | 19.06              | 19.06    | 19.06     | 19.96    |
| Treasury Bond                                    | 20.53              | 20.53    | 20.43     | 20.34    |
| Prime Lending Rate                               | 18.97              | 20.62    | 20.84     | 16.42    |
| Commercial Bank Average Weighted Deposits (AWDR) | 11.39              | 11.39    | 11.28     | 10.31    |

## Exchange Rates

|                | Week Ending Dec 19 | Week Ago | Month Ago | Dec 2007 | % Change 2007/08 |
|----------------|--------------------|----------|-----------|----------|------------------|
| US Dollar      | 111.87             | 111.03   | 110.04    | 108.84   | 2.78             |
| Sterling Pound | 169.59             | 164.94   | 163.32    | 219.28   | -22.91           |
| Euro           | 159.86             | 144.86   | 140.35    | 156.91   | 1.88             |
| Japanese Yen   | 1.26               | 1.20     | 1.13      | 0.96     | 31.25            |
| Indian Rupee   | 2.41               | 2.28     | 2.26      | 2.77     | -12.99           |



Source: Central Bank of Sri Lanka

## Money Supply

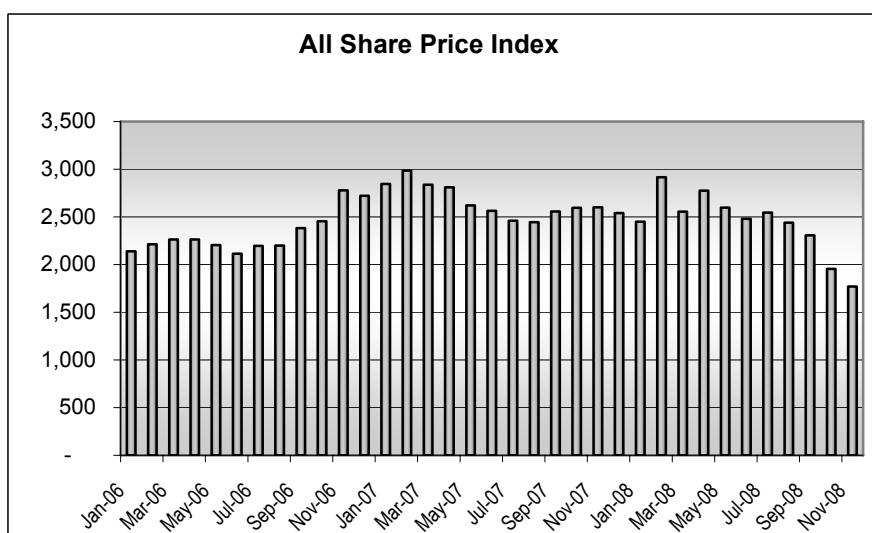
|                          | Oct 2008 | Sep 2008 | Aug 2008 | July 2008 | June 2008 | Oct 2007 | Sep 2007 | Aug 2007 | July 2007 | June 2007 | Growth 2007/08 (%) |
|--------------------------|----------|----------|----------|-----------|-----------|----------|----------|----------|-----------|-----------|--------------------|
| M <sub>1</sub> (Rs.bn.)  | 266.6    | 275.2    | 270.9    | 270.9     | 273.7     | 254.0    | 260.0    | 261.2    | 255.2     | 259.4     | 4.96               |
| M <sub>2</sub> (Rs.bn.)  | 1,249.2  | 1,248.6  | 1,229.1  | 1,229.1   | 1,202.0   | 1,106.4  | 1,097.7  | 1,085.3  | 1,068.1   | 1,063.0   | 12.91              |
| M <sub>2b</sub> (Rs.bn.) | 1,489.8  | 1,501.5  | 1,478.8  | 1,478.8   | 1,470.5   | 1,357.4  | 1,357.4  | 1,340.7  | 1,313.0   | 1,294.0   | 9.75               |

Source: Central Bank of Sri Lanka

## Share Market

|  | Week ending<br>Dec 18 | Week<br>Ago | Year<br>Ago |
|--|-----------------------|-------------|-------------|
| All Share Price Index (1985 = 100)<br>(ASPI)   | 1,526                 | 1,569       | 2,502       |
| Milanka Price Index (31/12/1998=1000)<br>(MPI) | 1,690                 | 1,753       | 3,264       |
| Average Daily Turnover (Rs.Mn)                 | 83                    | 35          | 170         |
| Market Capitalization (Rs.Bn.)                 | 496.4                 | 510.3       | 807.2       |

Source: Central Bank of Sri Lanka



## Crude Oil Prices

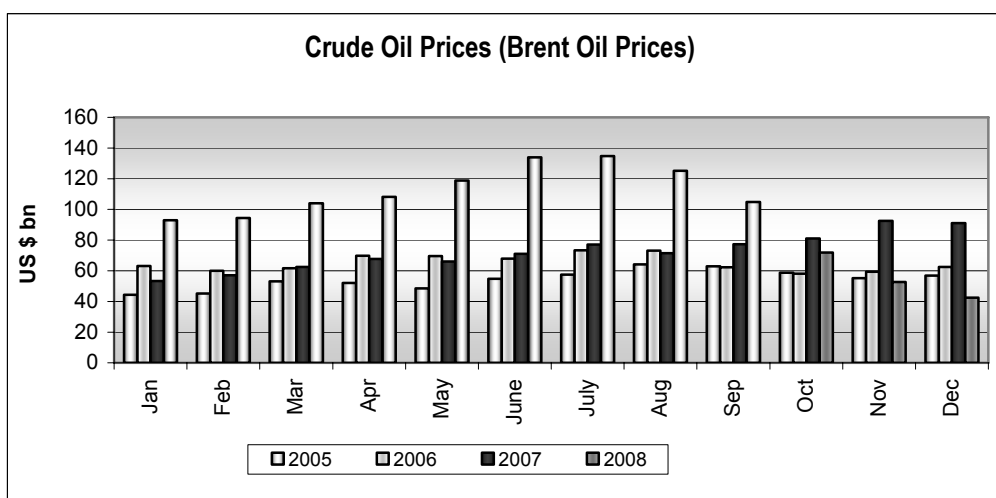
|  | Dec 19 | Dec 18 | Dec 17 | Dec 16 | Dec 15 | Week<br>Ago | Month<br>Ago | Year<br>Ago |
|--|--------|--------|--------|--------|--------|-------------|--------------|-------------|
| Brent (New York Closing Prices)<br>(US \$/bbl.)                    | 39.87  | 40.55  | 42.2   | 42.36  | 45.38  | 42.73       | 57.24        | 92.54       |
| WTI (US\$/bbl.)  | 33.17  | 36.75  | 40.17  | 43.84  | 44.67  | 46.27       | 61.06        | 96.36       |
| Singapore Plattes Prices<br>(Refined Petroleum Products)(US\$/bbl) |        |        |        |        |        |             |              |             |
| Petrol   | 42.5   | 44.2   | 43.9   | 41.95  | 40.7   | 37.01       | 54.75        | 99.28       |
| Diesel   | 59.45  | 61.35  | 61.45  | 59.8   | 58.7   | 57.68       | 70.10        | 107.10      |
| Kerosene   | 60.5   | 61.4   | 62.4   | 60.45  | 60.15  | 59.13       | 78.00        | 113.50      |

Source: Central Bank of Sri Lanka

## Crude Oil Prices (Monthly Average)

| Month     | WTI European Market (US\$/bbl) |       |               | Brent (US\$/bbl) |       |               |
|-----------|--------------------------------|-------|---------------|------------------|-------|---------------|
|           | 2006                           | 2007  | 2008          | 2006             | 2007  | 2008          |
| January   | 65.43                          | 54.24 | 90.40         | 63.18            | 53.37 | 92.87         |
| February  | 61.54                          | 56.99 | 93.29         | 60.15            | 58.80 | 94.30         |
| March     | 62.90                          | 62.27 | 105.86        | 62.12            | 62.46 | 104.00        |
| April     | 68.68                          | 64.04 | 112.03        | 70.08            | 67.78 | 108.15        |
| May       | 70.96                          | 62.68 | 124.67        | 69.74            | 66.05 | 122.54        |
| June      | 70.96                          | 67.47 | 133.87        | 68.59            | 71.01 | 134.83        |
| July      | 74.35                          | 73.53 | 135.35        | 73.77            | 77.02 | 134.83        |
| August    | 73.13                          | 72.18 | 125.03        | 73.06            | 70.76 | 125.16        |
| September | 63.94                          | 79.73 | 108.90        | 62.30            | 77.20 | 104.85        |
| October   | 58.86                          | 86.18 | 76.54         | 58.06            | 83.63 | 71.79         |
| November  | 59.20                          | 95.67 | 57.07         | 59.44            | 92.57 | 52.68         |
| December  | 62.03                          | 91.62 | <b>43.23*</b> | 62.50            | 91.07 | <b>42.50*</b> |

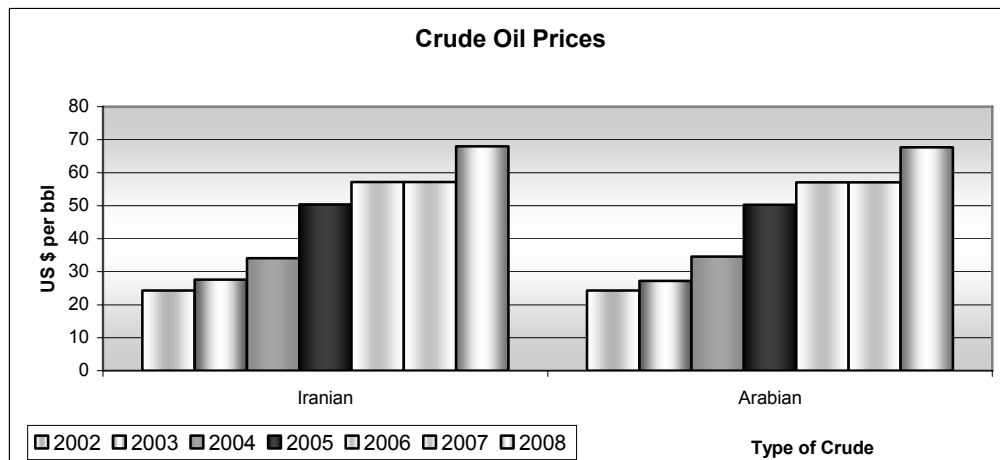
Source: Central Bank of Sri Lanka  
 \* Up to 19 Dec 2008



## Crude Oil Prices (US\$ Per Barrel)

| Month     | Iranian Light |        | Arabian Light |         |
|-----------|---------------|--------|---------------|---------|
|           | 2007          | 2008   | 2007          | 2008    |
| January   | 52.11         | 90.06  | 52.064        | 89.708  |
| February  | 55.96         | 92.25  | 55.908        | 91.904  |
| March     | 59.29         | 98.91  | 59.243        | 98.557  |
| April     | 64.41         | 105.20 | 64.359        | 104.803 |
| May       | 65.03         | 121.50 | 64.979        | 121.095 |
| June      | 66.53         | 130.32 | 66.484        | 129.919 |
| July      | 70.58         | 134.39 | 70.340        | 134.091 |
| August    | 68.65         | 114.72 | 68.413        | 114.419 |
| September | 74.45         | 97.02  | 74.211        | 97.716  |
| October   | 79.03         | 67.99  | 78.685        | 67.989  |
| November  | 89.67         |        | 89.318        |         |
| December  | 87.71         |        | 87.361        |         |

Source: Ceylon Petroleum Co-operation

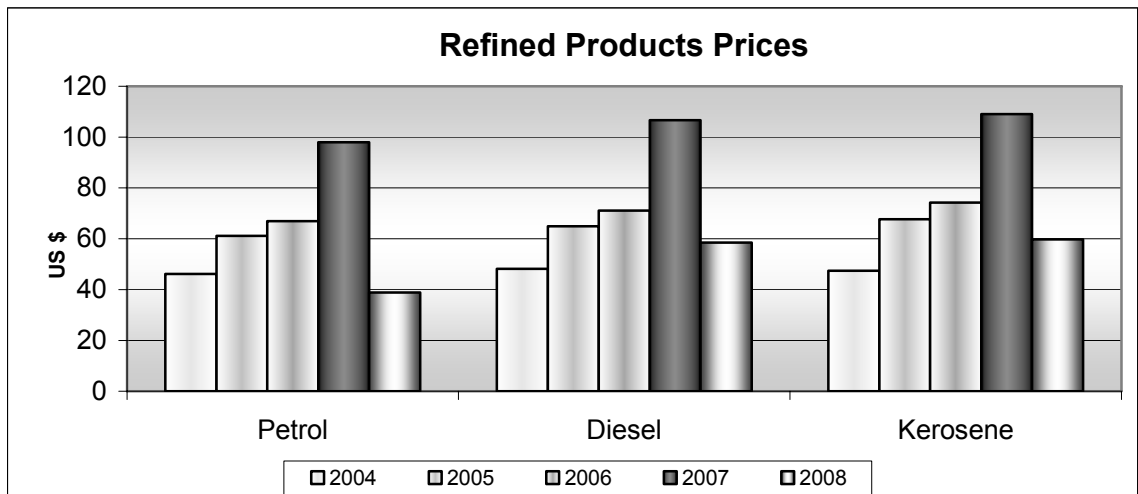


## Refined Product prices – Singapore Plattes Prices (US\$/bbl)

| Month     | Petrol  |       |               | Diesel |        |               | Kerosene |        |               |
|-----------|---------|-------|---------------|--------|--------|---------------|----------|--------|---------------|
|           | 2006    | 2007  | 2008          | 2006   | 2007   | 2008          | 2006     | 2007   | 2008          |
|           | January | 65.66 | 60.51         | 99.14  | 69.54  | 66.68         | 106.44   | 76.92  | 69.99         |
| February  | 64.45   | 64.35 | 96.03         | 65.84  | 70.94  | 108.03        | 74.88    | 70.80  | 108.64        |
| March     | 69.04   | 75.38 | 108.61        | 73.03  | 73.51  | 125.77        | 74.79    | 75.00  | 125.41        |
| April     | 80.48   | 82.57 | 116.70        | 83.23  | 80.07  | 138.36        | 85.05    | 80.81  | 137.95        |
| May       | 86.39   | 87.41 | 128.26        | 84.51  | 81.02  | 155.65        | 85.81    | 81.26  | 156.52        |
| June      | 84.38   | 83.32 | 138.57        | 86.91  | 83.45  | 165.37        | 87.07    | 83.09  | 164.13        |
| July      | 84.67   | 84.84 | 137.19        | 86.34  | 86.03  | 168.98        | 87.65    | 86.96  | 169.57        |
| August    | 80.44   | 75.75 | 120.20        | 86.39  | 84.16  | 145.70        | 89.97    | 82.97  | 150.35        |
| September | 65.08   | 82.83 | 108.68        | 75.71  | 90.71  | 122.48        | 80.65    | 90.47  | 127.51        |
| October   | 60.75   | 85.83 | 78.43         | 71.04  | 94.57  | 83.85         | 73.96    | 95.95  | 90.25         |
| November  | 62.31   | 98.92 | 47.28         | 70.00  | 106.66 | 68.47         | 73.63    | 112.84 | 75.14         |
| December  | 66.91   | 98.03 | <b>38.89*</b> | 73.29  | 106.61 | <b>58.50*</b> | 77.46    | 109.02 | <b>59.74*</b> |

Source: Central Bank of Sri Lanka

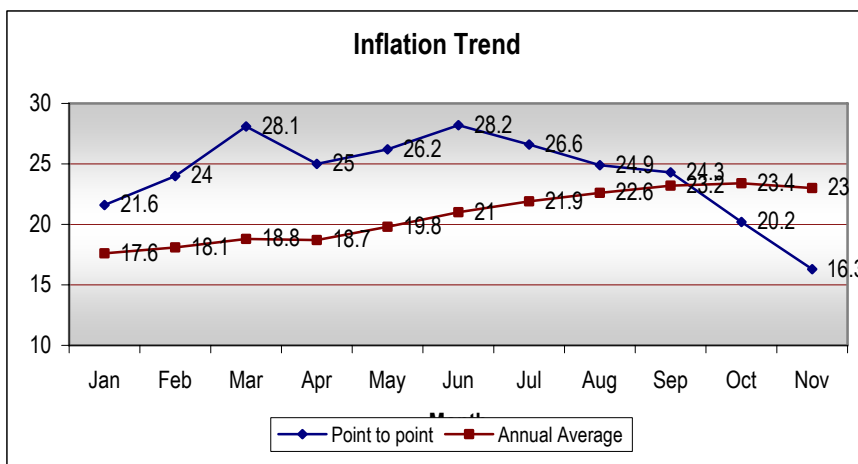
\*Up to 19th Dec 2008



# Inflation Trend

| Month     | CCPI New       |                | Core Inflation |                |
|-----------|----------------|----------------|----------------|----------------|
|           | 2008           |                | 2008           |                |
|           | Point to point | Annual Average | Point to point | Annual Average |
| January   | 21.6           | 17.6           | -              | -              |
| February  | 24.0           | 18.1           | -              | -              |
| March     | 28.1           | 18.8           | -              | -              |
| April     | 25.0           | 18.7           | 9.3            | 7.7            |
| May       | 26.2           | 19.8           | 9.6            | 7.9            |
| June      | 28.2           | 21.0           | 14.1           | 8.4            |
| July      | 26.6           | 21.9           | 17.2           | 9.2            |
| August    | 24.90          | 22.60          | 17.40          | 10.1           |
| September | 24.30          | 23.20          | 18.70          | 11.10          |
| October   | 20.20          | 23.40          | 18.10          | 12.10          |
| November  | 16.30          | 23.00          | 18.10          | 13.00          |

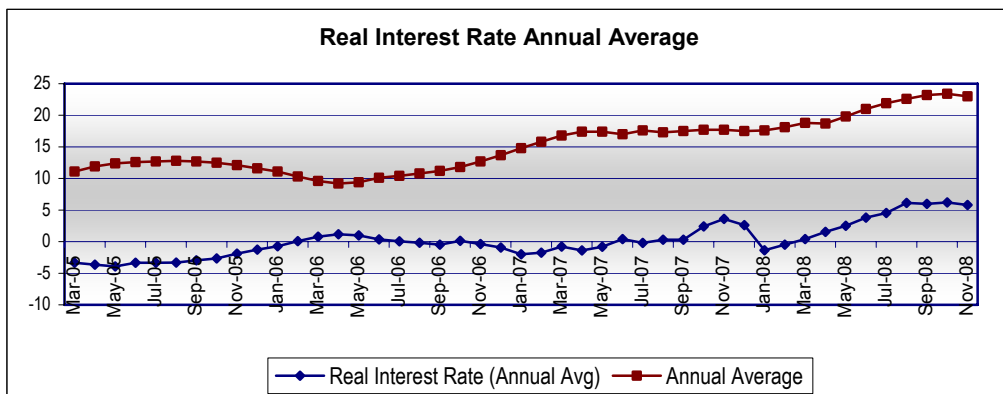
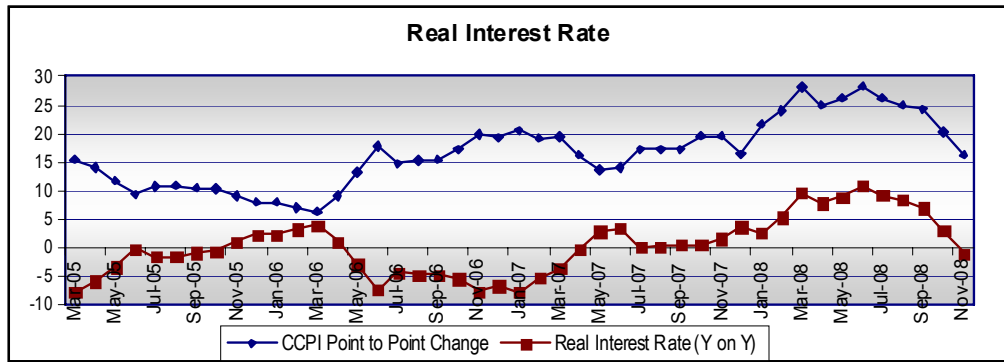
Source: Central Bank of Sri Lanka



# Real Interest Rates

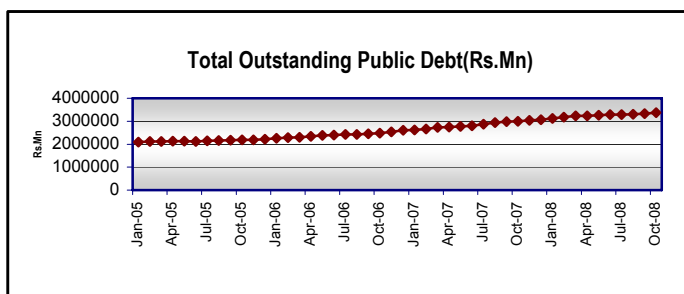
| Month   | CCPI Index | CCPI Point to Point Change | Annual Average | Treasury Bill Rate | Real Interest Rate (Y on Y) | Real Interest Rate (Annual Avg) |
|---------|------------|----------------------------|----------------|--------------------|-----------------------------|---------------------------------|
| Jan-07  | 5,184.3    | 20.5                       | 14.8           | 12.80              | -7.70                       | -2.00                           |
| Feb-07  | 5,116.0    | 19.2                       | 15.8           | 14.06              | -5.14                       | -1.74                           |
| Mar-07  | 5,029.6    | 19.5                       | 16.8           | 16.01              | -3.49                       | -0.79                           |
| Apr-07  | 5,025.4    | 16.3                       | 17.4           | 16.01              | -0.29                       | -1.39                           |
| May-07  | 5,176.4    | 13.7                       | 17.4           | 16.60              | 2.9                         | -0.8                            |
| June-07 | 5,344.3    | 14.0                       | 17.0           | 17.40              | 3.4                         | 0.4                             |
| July-07 | 5,496.5    | 17.2                       | 17.2           | 17.39              | 0.19                        | -0.21                           |
| Aug-07  | 5,453.2    | 17.3                       | 17.3           | 17.60              | 0.3                         | 0.3                             |
| Sep-07  | 5,513.8    | 17.3                       | 17.5           | 17.79              | 0.49                        | 0.29                            |
| Oct-07  | 5,723.0    | 19.6                       | 17.7           | 20.14              | 0.54                        | 2.44                            |
| Nov-07  | 5,976.2    | 19.6                       | 17.7           | 21.30              | 1.70                        | 3.60                            |
| Dec-07  | 5,954.9    | 16.4                       | 17.5           | 20.12              | 3.72                        | 2.62                            |
| Jan-08  | 6,302.5    | 21.6                       | 17.6           | 18.97              | 2.63                        | -1.37                           |
| Feb-08  | 6,345.4    | 24.0                       | 18.1           | 18.59              | 5.41                        | -0.49                           |
| Mar-08  | 6,441.7    | 28.1                       | 18.8           | 18.39              | 9.71                        | 0.41                            |
| Apr-08  | 195.4*     | 25.0                       | 18.7           | 17.14              | 7.86                        | 1.56                            |
| May-08  | 198.5*     | 26.2                       | 19.8           | 17.29              | 8.91                        | 2.51                            |
| Jun-08  | 205.9*     | 28.2                       | 21.0           | 17.29              | 10.91                       | 3.81                            |
| Jul-08  | 206.4*     | 26.6                       | 21.9           | 17.36              | 9.24                        | 4.54                            |
| Aug-08  | 206.3*     | 24.90                      | 22.60          | 16.46              | 8.44                        | 6.14                            |
| Sep-08  | 207.2*     | 24.30                      | 23.20          | 17.22              | 7.08                        | 5.98                            |
| Oct-08  | 206.6*     | 20.20                      | 23.40          | 17.20              | 3.00                        | 6.2                             |
| Nov-08  | 205.2*     | 16.3                       | 23.0           | 17.20              | -0.9                        | 5.8                             |

\* - new Colombo Consumers' Price Index



## Public Debt

| Public Debt (Rs.bn)                  | End Oct 2008   | Month ago      |
|--------------------------------------|----------------|----------------|
| Total Domestic Debt                  | 2,010.1        | 1,940.0        |
| Total Foreign Debt                   | 1,368.8        | 1,395.6        |
| <b>Total Outstanding Public Debt</b> | <b>3,378.9</b> | <b>3,335.6</b> |



Source: Central Bank of Sri Lanka

## GDP Growth Rate (%) - Quarterly

|             | 2008* 3 <sup>rd</sup> Quarter | 2007 3 <sup>rd</sup> Quarter | 2007* Annual |
|-------------|-------------------------------|------------------------------|--------------|
| Agriculture | 12.4                          | 3.8                          | 3.3          |
| Industry    | 5.6                           | 7.5                          | 7.6          |
| Service     | 5.5                           | 7.4                          | 7.1          |
| <b>GDP</b>  | <b>6.3</b>                    | <b>7.0</b>                   | <b>6.8</b>   |

\* Provisional

Source: Department of Census & Statistics

## International Commodity Prices

|  | Dec      | Week Ago | Month Ago |
|--|----------|----------|-----------|
| Rice   |          |          |           |
| Thailand 25% ( \$ )  | 400      | 420      | 425.00    |
| Vietnam 25% ( \$ )   | 350      | 350      | 325.00    |
| Wheat Flour  |          |          |           |
| Hard Red Winter US\$/MT (19.12.2008)                               | 238.00   | 220.00   | 242.00    |
| Soft Red Winter US\$/MT (19.12..2008)                              | 182.98   | 161.12   | 178.11    |
| Milk Powder (Oceania, indicative export prices US\$/Ton (November) | 2,550.00 | 2,925.00 | 2,925.00  |
| Rubber US\$/Kg(18.12.2008)   |          |          |           |
| RSS 1  | 1.15     | 1.15     | 1.38      |
| RSS 2  | 0.00     | 1.09     | 0.00      |
| RSS 3  | 1.09     | 1.07     | 0.00      |

Sources: Rice Online news update, Average of mid-point of price ranges reported bi – weekly by dairy market news (USDA),Czamikow.com, U.S. Wheat Associates – Weekly price report, Colombo Rubber Traders' Association

## Weekly Commodity Prices 3<sup>rd</sup> week of December (12.12.2008 – 19.12.2008)

| Item                  |         | Colombo   |               |          |           |          |
|-----------------------|---------|-----------|---------------|----------|-----------|----------|
|                       | Unit    | This Week | Price Range   | Week Ago | Month Ago | Year Ago |
| Rice                  |         |           |               |          |           |          |
| Samba (Avg.)          | 1 kg    | 73.21     | 70.00-79.00   | 74.48    | 72.11     | 62.65    |
| No. 1                 | 1 kg    | 74.42     | 70.00-79.00   | 76.78    | 74.07     | 64.69    |
| No. 2                 | 1kg     | 72.00     | 70.00-76.00   | 72.18    | 70.15     | 60.62    |
| Nadu Red              | 1kg     | 73.20     | 64.70-80.00   | 73.12    | 69.85     | 59.64    |
| Raw Red (Avg.)        |         |           |               |          |           |          |
| No. 1                 | 1kg     | 65.62     | 62.50-70.00   | 65.94    | 63.96     | 57.14    |
| No. 2                 | 1kg     | 62.66     | 58.00-68.00   | 62.43    | 62.00     | 53.86    |
| Wheat Flour           | 1 kg    | 69.52     | 66.00-75.00   | 69.70    | 69.60     | 62.54    |
| Bread                 | 400g    | 38.05     | 32.00-40.00   | 37.39    | 37.39     | 33.50    |
| Sugar                 | 1 kg    | 64.43     | 62.00-68.00   | 64.46    | 63.83     | 50.64    |
| Anchor                | 400g    | 275.00    | 275.00        | 275.00   | 275.00    | 275.00   |
| Potatoes (Imported)   | 1 kg    | 78.02     | 60.00-92.50   | 75.61    | 63.70     | 67.74    |
| Red Dhal              | 1kg     | 205.01    | 190.00-240.00 | 207.23   | 211.38    | 117.76   |
| Meat                  |         |           |               |          |           |          |
| Beef                  | 1kg     | 376.76    | 360.00-385.00 | 377.14   | 377.89    | 320.00   |
| Chicken               |         |           |               |          |           |          |
| Fresh                 | 1kg     | 353.52    | 310.00-380.00 | 342.14   | 345.44    | 288.57   |
| Broiler               | 1kg     | 316.00    | 295.00-340.00 | 314.00   | 319.17    | 252.08   |
| Fresh Fish            |         |           |               |          |           |          |
| Paraw                 | 1 kg    | 564.60    | 400.00-800.00 | 583.85   | 525.00    | 488.22   |
| Balaya                | 1 kg    | 406.67    | 360.00-440.00 | 425.00   | 352.50    | 298.67   |
| Kelawalla             | 1 kg    | 562.83    | 400.00-680.00 | 538.13   | 478.64    | 395.39   |
| Salaya                | 1 kg    | 124.21    | 100.00-160.00 | 104.92   | 100.35    | 95.71    |
| Dried Fish            |         |           |               |          |           |          |
| Sprats                | 1 kg    | 358.03    | 300.00-450.00 | 353.59   | 361.25    | 252.40   |
| Eggs                  | Each    | 11.08     | 10.00-12.00   | 10.31    | 10.13     | 8.68     |
| Coconut               | Each    | 25.57     | 18.00-32.00   | 26.65    | 28.50     | 27.67    |
| Coconut Oil           | 750 ml  | 133.15    | 115.00-170.00 | 130.72   | 131.91    | 151.98   |
| Red Onions            | 1 kg    | 127.91    | 100.00-160.00 | 137.75   | 108.26    | 144.05   |
| Big Onions (Imported) | 1 kg    | 93.33     | 90.00-100.00  | 87.54    | 70.00     | 56.36    |
| Brinjal               | 1kg     | 103.22    | 80.00-133.00  | 87.96    | 79.69     | 64.95    |
| Beans Green           | 1 kg    | 118.10    | 80.00-153.33  | 105.16   | 127.68    | 77.71    |
| Cabbage               | 1 kg    | 75.72     | 40.00-100.00  | 69.14    | 68.55     | 63.17    |
| Kerosene oil          | 1 liter | 60.00     | 60.00         | 60.00    | 60.00     | 68.00    |
| Diesel (CPC)          | 1 liter | 80.00     | 80.00         | 80.00    | 80.00     | 75.00    |
| Petrol                | 1 liter | 122.00    | 122.00        | 122.00   | 142.00    | 117.00   |
| Gas (Shell)           | 12.5kg  | 1,860.00  | 1,860.00      | 1,860.00 | 1,860.00  | 1,303.00 |

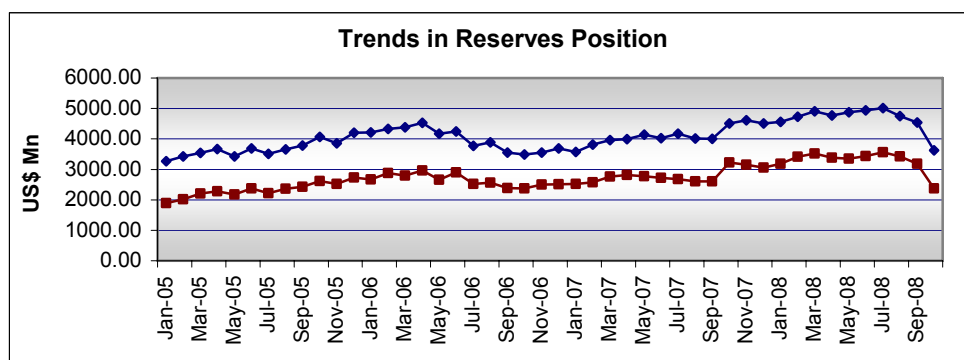
Source: Census and Statistics, Central Bank of Sri Lanka, Regional Development Bank

**Note:** The sample for Colombo represent markets in Pettah, Maradana, Borella, Dematagoda, Grandpass, kirulapana, Wellawatta, Narahenpita, Nugegoda, and Maning town.

## External Finance

| External Assets (US\$ Mn) | Oct 2008 | Sep 2008 | Aug 2008 | July 2008 | June 2008 | Oct 2007 | Sep 2007 | Aug 2007 | July 2007 | June 2007 | Growth 2007/08 (%) |
|---------------------------|----------|----------|----------|-----------|-----------|----------|----------|----------|-----------|-----------|--------------------|
| Total Reserves            | 3,627.4  | 4,543.5  | 4,745.9  | 5,014.5   | 4,939.6   | 4,509.0  | 4,006.0  | 4,016.4  | 4,176.2   | 4,023.6   | -19.55             |
| Gross Official Reserves   | 2,374.4  | 3,185.4  | 3,424.4  | 3,557.6   | 3,432.6   | 3,226.4  | 2,603.9  | 2,610.3  | 2,680.2   | 2,719.2   | -26.41             |

Source: Central Bank of Sri Lanka



## Private Remittances (US\$ Mn.)

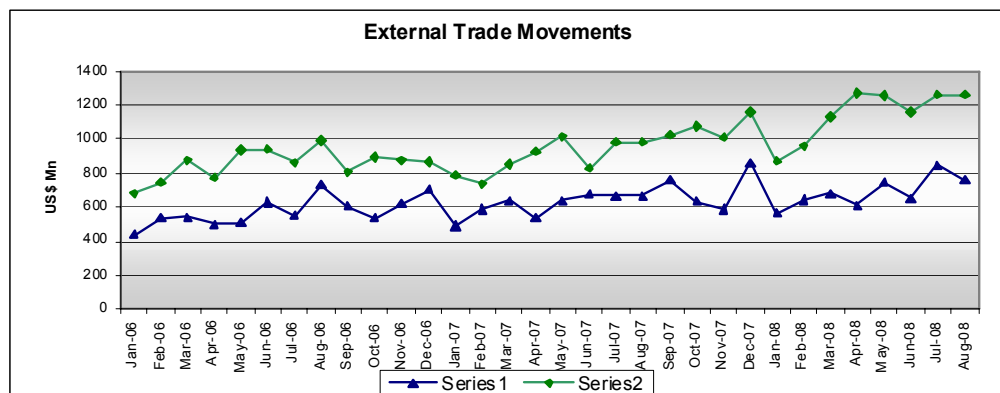
|          | 2008 Jan-Sep | 2007 Jan-Sep | % Change | 2007 Total |
|----------|--------------|--------------|----------|------------|
| Inflows  | 2,219.1      | 1,813.1      | 22.4     | 2,501.5    |
| Outflows | 224.8        | 191.4        | 17.4     | 287.7      |
| Net      | 1,994.3      | 1,621.7      | 23.0     | 2,213.8    |

Source: Central Bank of Sri Lanka

## External Trade

|                                | Sep<br>2008<br>(US\$ Mn) | Sep<br>2007<br>(US\$ Mn) | Growth<br>2007/08(%) | Jan-sep<br>2008<br>Cumulative<br>(US\$ Mn.) | Jan-Sep<br>2007<br>Cumulative<br>(US\$ Mn.) | Growth<br>2007/08 (%) |
|--------------------------------|--------------------------|--------------------------|----------------------|---|---|-----------------------|
| <b>Exports</b>                 | <b>651.79</b>            | <b>719.39</b>            | <b>-9.40</b>         | <b>6,159.11</b>                             | <b>5,598.44</b>                             | <b>10.01</b>          |
| Agriculture                    | 168.71                   | 149.92                   | 12.53                | 1,450.26                                    | 1,083.87                                    | 33.80                 |
| Tea                            | 109.56                   | 103.27                   | 6.09                 | 995.14                                      | 727.62                                      | 36.77                 |
| Other                          | 59.15                    | 46.65                    | 26.80                | 455.09                                      | 378.91                                      | 20.11                 |
| Industrial                     | 467.03                   | 552.62                   | -15.49               | 4,575.59                                    | 4,380.02                                    | 4.47                  |
| Food, Beverages and<br>Tobacco | 36.71                    | 61.91                    | -40.70               | 347.88                                      | 392.85                                      | -11.45                |
| Textiles and Garments          | 253.43                   | 291.64                   | -13.10               | 2,524.31                                    | 2,454.76                                    | 2.83                  |
| Rubber products                | 38.52                    | 45.46                    | -15.27               | 420.82                                      | 344.56                                      | 22.13                 |
| Diamond and Jewellery          | 40.48                    | 36.25                    | 11.67                | 319.07                                      | 266.65                                      | 19.66                 |
| Other                          | 36.09                    | 43.79                    | -17.58               | 806.32                                      | 576.95                                      | 39.76                 |
| Mineral                        | 16.05                    | 10.73                    | 49.58                | 105.59                                      | 102.19                                      | 3.33                  |
| Unclassified                   | 0                        | 6.12                     | -100.00              | 27.60                                       | 32.37                                       | -14.74                |
| <b>Imports</b>                 | <b>1,234.33</b>          | <b>1,006.35</b>          | <b>22.65</b>         | <b>9,447.14</b>                             | <b>7,992.91</b>                             | <b>18.19</b>          |
| Consumer goods                 | 178.87                   | 167.26                   | 6.94                 | 1,849.54                                    | 1,499.17                                    | 23.37                 |
| Food & Drink                   | 91.33                    | 92.76                    | -1.54                | 1,138.36                                    | 799.55                                      | 42.38                 |
| Other Consumer Goods           | 87.54                    | 74.5                     | 17.50                | 799.76                                      | 699.64                                      | 14.31                 |
| Motor Cars & Cycles            | 29.22                    | 25.19                    | 16.00                | 305.96                                      | 230.50                                      | 32.74                 |
| Intermediate goods             | 767.88                   | 600.58                   | 27.86                | 6,427.24                                    | 4,555.69                                    | 41.08                 |
| Petroleum                      | 288.97                   | 268.1                    | 7.78                 | 2,763.04                                    | 1,578.57                                    | 75.03                 |
| Fertilizer                     | 69.85                    | 19.67                    | 255.11               | 373.81                                      | 124.09                                      | 201.24                |
| Chemicals                      | 32.85                    | 23.53                    | 39.61                | 274.24                                      | 214.07                                      | 28.11                 |
| Textiles & Clothing            | 155.63                   | 130.04                   | 19.68                | 1,244.51                                    | 1,244.03                                    | 0.04                  |
| Diamonds                       | 36.2                     | 21                       | 72.38                | 313.84                                      | 182.72                                      | 71.76                 |
| Other Intermediate Goods       | 184.35                   | 138.2                    | 33.39                | 1,457.69                                    | 1,212.15                                    | 20.26                 |
| Investment goods               | 267.33                   | 235.05                   | 13.73                | 2,243.37                                    | 1,876.92                                    | 19.52                 |
| Machinery & Equipment          | 112.14                   | 112.64                   | -0.44                | 1,010.58                                    | 858.98                                      | 17.65                 |
| Transport Equipment            | 25.06                    | 31.3                     | -19.94               | 268.34                                      | 274.25                                      | -2.15                 |
| Building Materials             | 86.94                    | 65.43                    | 32.87                | 701.57                                      | 538.02                                      | 30.40                 |
| Other Investment Goods         | 43.18                    | 25.67                    | 68.21                | 262.85                                      | 201.46                                      | 30.47                 |
| Unclassified                   | 20.26                    | 3.46                     | 485.55               | 106.47                                      | 61.29                                       | 73.72                 |
| <b>Trade Balance</b>           | <b>-582.54</b>           | <b>-286.96</b>           | <b>103.00</b>        | <b>-3,288.03</b>                            | <b>-2,394.47</b>                            | <b>24.97</b>          |

Source: Central Bank of Sri Lanka



## Tourist Arrivals and Earnings by Month (2006-08)

| Arrivals     |                |                |        |                   | Earnings (US\$ Mn) |              |      |                   |
|--------------|----------------|----------------|--------|-------------------|--------------------|--------------|------|-------------------|
| Month        | 2006           | 2007           | 2008   | % cha.<br>2007/08 | 2006               | 2007         | 2008 | % cha.<br>2007/08 |
| January      | 52,231         | 56,571         | 56,916 | 0.60              | 38.1               | 49.1         | 44.4 | -9.5              |
| February     | 52,687         | 43,033         | 40,551 | -5.76             | 38.4               | 37.3         | 31.6 | -15.28            |
| March        | 54,746         | 35,031         | 38,049 | 8.61              | 39.9               | 30.4         | 29.7 | -2.30             |
| April        | 49,776         | 33,039         | 29,747 | -9.96             | 36.3               | 14.0         | 23.2 | 65.71             |
| May          | 43,824         | 26,307         | 31,140 | 18.37             | 32.0               | 20.5         | 24.3 | 18.53             |
| June         | 44,066         | 30,810         | 27,960 | -9.25             | 32.1               | 24.0         | 21.8 | -9.16             |
| July         | 55,354         | 44,202         | 32,982 | -25.38            | 40.3               | 34.5         | 25.7 | -25.50            |
| August       | 52,931         | 44,682         | 30,672 | -31.35            | 38.6               | 34.9         | 24.0 | -31.23            |
| September    | 38,485         | 37,104         | 29,529 | -20.41            | 28.1               | 28.9         | 23.0 | -20.41            |
| October      | 38,815         | 39,565         | 35,103 | -11.28            | 56.5               | 30.05        | 27.4 | -8.82             |
| November     | 37,591         | 42,548         | 36,901 | -13.27            | 29.6               | 34.05        | 62.6 | 83.85             |
| December     | 39,224         | 61,116         |        |                   | 31.0               | 47.6         |      |                   |
| <b>Total</b> | <b>559,603</b> | <b>494,008</b> |        |                   | <b>440.9</b>       | <b>385.3</b> |      |                   |

Source: Sri Lanka Tourist Board